



**NISSAN**  
**NEW QASHQAI**  
**& QASHQAI+2**  
**E-BROCHURE**



**QASHQAI**

URBANPROOF  
MASTERED

# AHEAD OF THE GAME

Tougher, leaner,  
keener. New QASHQAI.  
The crossover mastered.

**New restyled QASHQAI**

looks better than ever with an aggressive front grille and sleek headlight design



NISSAN

QASHQAI



NISSAN

QASHQAI

QASHQAI



**Safer than ever**

Better lighting and a commanding driving position help you anticipate the road ahead. Whilst high ground clearance, ESP and ABS keep you in control

# FINE TUNE YOUR SKILLS

# MASTER THE FIELD

A photograph showing the interior of a car, specifically the rear passenger area. The seats are upholstered in a light beige or cream-colored leather with visible stitching. A sunroof is visible at the top of the frame, and the overall lighting is bright and airy.

Get the insider's view.  
Relax in the roomy,  
ergonomically designed interior.  
An optimised aero and  
insulation package provides  
increased refinement, whilst  
cruise control and  
Bluetooth ensure  
a hassle-free drive.

**QASHQAI:** 5 SEATS

**QASHQAI+2:** 7 SEATS



\* Trim shown not UK specification



A Nissan Qashqai+2 is shown from the front-left, with a large splash of red liquid splashing over it and onto the ground. The background is a modern building with a glass facade and a grid-like ceiling. The text 'PERFECT THE ART' is overlaid on the right side of the image.

# PERFECT THE ART

Prepare yourself  
for a power-packed  
splash with two  
new body colours:  
Magnetic Red and  
Mineral Grey.

QASHQAI+2

# Choose your new QASHQAI

## VISIA:

Enter into the stylish crossover world.

- 16" Alloy wheels
- Air conditioning
- CD radio with 4 speakers and aux jack
- Bluetooth
- New combimeter with TFT screen
- Front & rear electric windows
- Remote central locking
- ESP
- 6 airbags
- ISOFIX
- ABS with EBD and Brake Assist

## QASHQAI+2 only:

- Roof rails
- Rear privacy glass

## ACENTA:

Refined atmosphere and innovative features in the crossover benchmark.

### Additional to Visia

- 17" Alloy wheels
- Dual zone climate control
- Rain-sensing wipers
- Automatic lighting system
- Ultrasonic rear park system (RPS)
- 6 CD auto-changer with 6 speakers
- Cruise control with speed limiter
- Front fog lamps
- Body colour door handles and mirrors

- Panoramic glass roof

## n-tec

Attractive crossover with stand-out design and friendly technology.

### Additional to Acenta

- Nissan Connect (in lieu of 6 CD)
- Colour reversing camera (in lieu of RPS)
- Panoramic glass roof
- Roof rails
- Rear privacy glass

## TEKNA:

The state-of-the-art urban crossover.

### Additional to n-tec

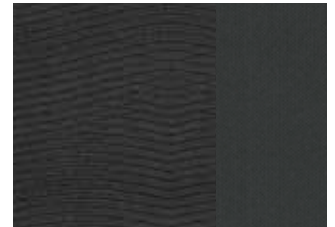
- 18" Alloy wheels
- Graphite leather trim
- Heated front seats
- Intelligent key
- BOSE 7-speaker system
- Xenon headlamps with headlamp washers

## VISIA



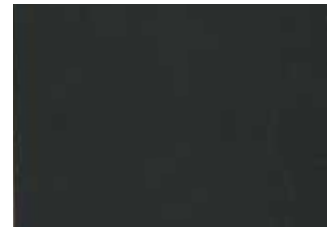
Charcoal Cloth

## ACENTA & n-tec



Graphite Cloth

## TEKNA



Graphite Leather

## 2 NEW COLORS



NEW Mineral Grey /M KAQ



NEW Magnetic Red /M NAJ

## Solid /S - Metallic /M



Faded Denim /M B52



Nightshade /M GAB



Blade Silver /M KY0



Pearl Black /M Z11



Cayman Blue /M BW9



Café Latte /M C30



Flame Red /S Z10



Arctic White /S 326

## ENGINE LINE UP

| Engine      | Output (hp) | Available Transmissions      |
|-------------|-------------|------------------------------|
| Diesel      |             |                              |
| 1.5 dCi     | 106         | 6-Speed Manual               |
| 2.0 dCi     | 150         | 6-Speed Manual               |
| 2.0 dCi 4x4 | 150         | 6-Speed Manual, 6-Speed Auto |
| Petrol      |             |                              |
| 1.6         | 115         | 5-Speed Manual               |
| 2.0         | 140         | 6-Speed Manual, CVT*         |
| 2.0 4x4     | 140         | CVT                          |

## DIMENSIONS



# CHALLENGE IS WHAT WE DO AT NISSAN

We say we make cars with the belief that travelling is more than a journey from A to B. We claim our cars are made to add to your confidence, to make you feel ready to go anywhere at any time and for any unforeseen challenge you might encounter. **You challenge us to "prove it".**

Get to know more at : <http://www.nissan-proveit.com>



## ARE YOU TOUGH LIKE QASHQAI ?

QASHQAI PROOF # 7.5 stars in Euro NCAP crash tests\*.

Join the "prove it" community at <http://www.nissan-proveit.com>



## QASHQAI GUARANTEES YOU ENJOY YOUR DRIVE FOR LONGER WITH A:

- > 60,000 MILE / 3 YEAR WARRANTY<sup>^</sup>
- > 12 YEAR ANTI-CORROSION WARRANTY
- > 12,500 MILE / 12 MONTH SERVICE INTERVAL

\* 23/05/2007: EURO NCAP (the European New Car Assessment Programme), announced that QASHQAI has been awarded the maximum five-star rating for adult occupant protection, with the highest ever recorded score for any vehicle.

<sup>\*</sup>Not available on QASHQAI+2.

<sup>^</sup>Whichever comes first.

NEW QASHQAI PRICE LIST



| Doorplan | Grade                 | Engine       | Transmission | Basic Price | VAT      | Total Retail | On The Road Price |
|----------|-----------------------|--------------|--------------|-------------|----------|--------------|-------------------|
| 5 door   | VISIA                 | 1.6          | 5 manual 4x2 | 12,927.66   | 2,262.34 | 15,190       | 15,395            |
|          |                       | 1.5 dCi      | 6 manual 4x2 | 14,229.79   | 2,490.21 | 16,720       | 16,895            |
|          |                       | 2.0          | 6 manual 4x2 | 14,191.49   | 2,483.51 | 16,675       | 16,905            |
|          |                       |              | CVT 4x2      | 15,212.77   | 2,662.23 | 17,875       | 18,105            |
|          |                       | 2.0 dCi      | 6 manual 4x2 | 15,502.13   | 2,712.87 | 18,215       | 18,445            |
|          | VISIA Pure Drive 129g | 1.5 dCi      | 6 manual 4x2 | 14,144.68   | 2,475.32 | 16,620       | 16,795            |
|          | ACENTA                | 1.6          | 5 manual 4x2 | 14,289.36   | 2,500.64 | 16,790       | 16,995            |
|          |                       | 1.5 dCi      | 6 manual 4x2 | 15,591.49   | 2,728.51 | 18,320       | 18,495            |
|          |                       | 2.0          | 6 manual 4x2 | 15,553.19   | 2,721.81 | 18,275       | 18,505            |
|          |                       |              | CVT 4x2      | 16,574.47   | 2,900.53 | 19,475       | 19,705            |
|          |                       | 2.0 dCi      | 6 manual 4x2 | 16,863.83   | 2,951.17 | 19,815       | 20,045            |
|          | n-tec                 | 1.6          | 5 manual 4x2 | 15,480.85   | 2,709.15 | 18,190       | 18,395            |
|          |                       | 1.5 dCi      | 6 manual 4x2 | 16,782.98   | 2,937.02 | 19,720       | 19,895            |
|          |                       | 2.0          | 6 manual 4x2 | 16,744.68   | 2,930.32 | 19,675       | 19,905            |
|          |                       |              | CVT 4x2      | 17,765.96   | 3,109.04 | 20,875       | 21,105            |
|          |                       |              | CVT 4x4      | 19,042.55   | 3,332.45 | 22,375       | 22,645            |
|          |                       | 2.0 dCi      | 6 manual 4x2 | 18,055.32   | 3,159.68 | 21,215       | 21,445            |
|          |                       |              | 6 manual 4x4 | 19,331.91   | 3,383.09 | 22,715       | 22,945            |
|          | 6 auto 4x4            |              | 20,319.15    | 3,555.85    | 23,875   | 24,145       |                   |
|          | TEKNA                 | 1.6          | 5 manual 4x2 | 16,842.55   | 2,947.45 | 19,790       | 19,995            |
|          |                       | 1.5 dCi      | 6 manual 4x2 | 18,144.68   | 3,175.32 | 21,320       | 21,495            |
|          |                       | 2.0          | 6 manual 4x2 | 18,106.38   | 3,168.62 | 21,275       | 21,505            |
|          |                       |              | CVT 4x2      | 19,127.66   | 3,347.34 | 22,475       | 22,705            |
|          |                       |              | CVT 4x4      | 20,404.26   | 3,570.74 | 23,975       | 24,245            |
| 2.0 dCi  |                       | 6 manual 4x2 | 19,417.02    | 3,397.98    | 22,815   | 23,045       |                   |
|          |                       | 6 manual 4x4 | 20,693.62    | 3,621.38    | 24,315   | 24,545       |                   |
|          |                       | 6 auto 4x4   | 21,680.85    | 3,794.15    | 25,475   | 25,745       |                   |

NEW QASHQAI+2 PRICE LIST



| Doorplan   | Grade  | Engine  | Transmission | Basic Price | VAT      | Total Retail | On The Road Price |
|------------|--------|---------|--------------|-------------|----------|--------------|-------------------|
| 5 door     | VISIA  | 1.6     | 5 manual 4x2 | 14,034.04   | 2,455.96 | 16,490       | 16,695            |
|            |        | 1.5 dCi | 6 manual 4x2 | 15,331.91   | 2,683.09 | 18,015       | 18,190            |
|            |        | 2.0     | 6 manual 4x2 | 15,297.87   | 2,677.13 | 17,975       | 18,245            |
|            |        | 2.0 dCi | 6 manual 4x2 | 16,608.51   | 2,906.49 | 19,515       | 19,745            |
|            | ACENTA | 1.6     | 5 manual 4x2 | 15,736.17   | 2,753.83 | 18,490       | 18,695            |
|            |        | 1.5 dCi | 6 manual 4x2 | 17,034.04   | 2,980.96 | 20,015       | 20,190            |
|            |        | 2.0     | 6 manual 4x2 | 17,000.00   | 2,975.00 | 19,975       | 20,245            |
|            |        | 2.0 dCi | 6 manual 4x2 | 18,310.64   | 3,204.36 | 21,515       | 21,745            |
|            | n-tec  | 1.6     | 5 manual 4x2 | 16,417.02   | 2,872.98 | 19,290       | 19,495            |
|            |        |         | 6 manual 4x2 | 17,714.89   | 3,100.11 | 20,815       | 20,990            |
|            |        | 2.0     | 6 manual 4x2 | 17,680.85   | 3,094.15 | 20,775       | 21,045            |
|            |        |         | CVT 4x4      | 19,978.72   | 3,496.28 | 23,475       | 23,745            |
|            |        | 2.0 dCi | 6 manual 4x2 | 18,991.49   | 3,323.51 | 22,315       | 22,545            |
|            |        |         | 6 manual 4x4 | 20,234.04   | 3,540.96 | 23,775       | 24,005            |
|            | TEKNA  | 1.6     | 5 manual 4x2 | 17,778.72   | 3,111.28 | 20,890       | 21,095            |
|            |        |         | 6 manual 4x2 | 19,076.60   | 3,338.40 | 22,415       | 22,590            |
|            |        | 2.0     | 6 manual 4x2 | 19,042.55   | 3,332.45 | 22,375       | 22,645            |
|            |        |         | CVT 4x4      | 21,340.43   | 3,734.57 | 25,075       | 25,345            |
|            |        | 2.0 dCi | 6 manual 4x2 | 20,353.19   | 3,561.81 | 23,915       | 24,145            |
|            |        |         | 6 manual 4x4 | 21,595.74   | 3,779.26 | 25,375       | 25,605            |
| 6 auto 4x4 |        |         | 22,617.02    | 3,957.98    | 26,575   | 26,845       |                   |
| 6 auto 4x4 |        |         | 22,617.02    | 3,957.98    | 26,575   | 26,845       |                   |



MURANO



QASHQAI

We see **SHIFT\_** as an invitation. To challenge whatever feels too familiar. To open your mind to the unfamiliar. To ask the questions no-one else is asking. And to find answers no-one else can. At Nissan, we do this every day. And it shapes everything we do. The result is a line-up of vehicles that represents a pure, uncompromising shift from the ordinary.

Visit our website at:  
[www.nissan.co.uk](http://www.nissan.co.uk)

Dealer stamp:



SHIFT\_ the way you move

Every effort has been made to ensure that the content of this publication is correct at the time of going to press (December 2009). This brochure has been produced featuring prototype vehicles exhibited at motor shows. In accordance with the company's policy of continuously improving its products, Nissan International reserves the right to change at any time the specification and the vehicles described and shown in this publication. Nissan dealers will be informed of any such modifications as quickly as possible. Please check with your local Nissan dealer to receive the most up-to-date information. Because of the limitations of the printing processes used, the colours shown in this brochure may differ slightly from the actual colours of the paint and interior trim materials used. All rights reserved. Reproduction in whole or part of this brochure without the written permission of Nissan International is forbidden.

This brochure is made from chlorinefree paper – 12/2009  
Part Number: 99999-53962  
Prices effective from 1st January 2010 unless otherwise stated.